



Datasheet

LDM-520-1000-C Green Laser Module

Features

- Multi Transverse Mode
- Corrected Beam Profile
- Divergence <math><0.5\text{mrad}</math>
- ESD Protection Device

Absolute Maximum Ratings

Item	Symbol	Absolut max. Ratings	Unit
Forward Current (Tc=25°C)	If	2.0	A
Allowable Reverse Current (Tc=25°C)	Ir (LD)	85	mA
Storage Temperature	Tstg	-40~85	°C
Operating Case Temperature	Tc	0~50	°C

Optical Characteristics

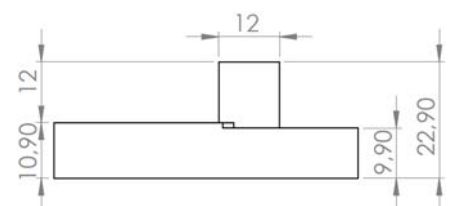
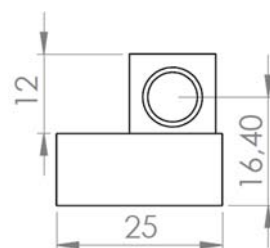
Item	Condition	Symbol	Min	Typ	Max	Unit
Optical Output Power	If=1.6A	Po	0.85	1.0	-	W
Dominant Wavelength	If=1.6A	λ_d	518	525	532	nm
Threshold Current	CW	Ith	250	300	350	mA
Slope Efficiency	CW	η	-	0.6	0.8	W/A
Operating Voltage	If=1.6A	Vop	4.0	-	6.0	V
Diode Beam Divergence (1/e ²)	If=1.6A	$\theta_{//}$	5	14	20	deg.
		θ_{\perp}	30	40	50	deg.
Emission Point Accuracy	If=1.6A	$\Delta\theta_{\perp}$	-5.0	-	5.0	deg.
Beam Size (4 σ)	If=1.6A	-	4x3	4x4	4x5	mm
Module Beam Divergence (full angle)	If=1.6A	θ	0.8	1.0	1.2	mrad

Connector

Red = Plus

Black = Minus

Dimensions



All technical parameters are subject to change without notice.



New Laser Generation

Fon: +49 561 70562870

Fax: +49 561 70562871

Mail: info@lasertack.com

Web: www.lasertack.com